

# Accessing the WebVPN for Catholic Health

- o Go to <https://webvpn.chsbuffalo.org>, which is called the WebVPN



## Catholic Health WebVPN

Username   
Password

Please login using your SecurID username and passcode.

Virtual Desktop Users: [Click here to access the correct login page](#)

### Support/Help Information:

Start here with the support document - [How to use the Catholic Health VPN](#)

If you have any further issues, questions, or concerns please call the Helpdesk at (716) 828-3600.

To connect to a Secure Meeting please click [here](#)

- o For username, put in the name given to you in your paperwork. It is usually formatted as the first letter of your first name, and the first seven letters of your last name.
- o Type in the 6 digits currently seen on your fob screen. There are bars on the left side that tell you how much time you have until the next number comes up.



- o Once in, it will ask you to set up a PIN. This is a 4 to 8 digit, numbers-only code that you will need to remember. Type it in twice and click Save Changes.
- o You will be taken back to the main screen. Wait for a fresh set of numbers if it hasn't changed recently. Put in your username again. In the password line, first put the PIN you just chose, then the 6 new digits on the fob screen. Your password ends up being a long string of numbers, the first part is your PIN and the second is the ever-changing digits on the fob screen.

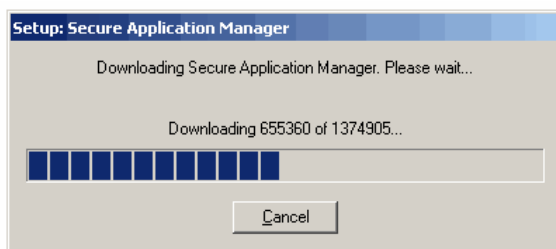
## Additional Steps for Soarian Clinical Access:

**\*\*After logging in successfully, you might get one, or more, of the following prompts depending on your Internet Explorer security settings\*\***

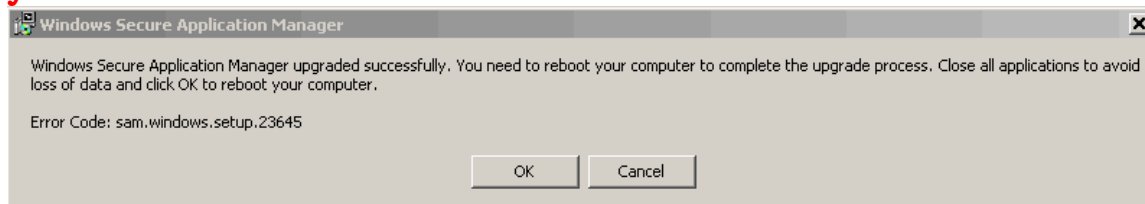
Click Run if prompted again to installed ActiveX control



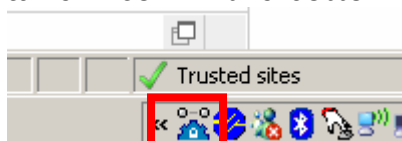
You should now see the Windows Secure Application Manager downloading:



**Please note that if you click ok at this screen, your computer will reboot, you should hit Cancel in most cases to avoid this.**



After this you should be taken to the list of CHS applications, you will also see a new icon in the bottom right hand screen that looks like this:



**If its working correctly, it will turn blue, if it's not blue, then something is wrong.**

- Once everything has loaded, you will be on the Bookmark Page. Click on the link for Soarian Clinical Access PROD.

**Catholic Health** \*\*\* Important Notice \*\*\*  
Access is limited to authorized Catholic Health System users.  
Systems are monitored for unauthorized use.

Home Pref

**Catholic Health Virtual Extranet.**  
If you experience any issues connecting please call the CHS Help Desk at (716) 828-3600. Remote Access problems will be addressed on the next business day.  
[Please note Soarian EDM now works from Soarian Clinicals. TraceMaster Vue can also be launched from the link below!](#)

**Web Bookmarks**

- Soarian@ Clinicals**  
Soarian@ Clinicals with EDM and MagicWeb access
- MagicWeb**
- Soarian EDM (eHIM)**  
\*\*Soarian EDM now available through Soarian Clinicals link above\*\*
- TraceMaster VUE Application**  
TraceMaster Vue can now be launched from this link!
- TraceMaster Client Install**  
Use First time only!
- Buffalo Mercy Medhost Webviewer**
- Kenmore Mercy Medhost Webviewer**
- MACC Medhost Webviewer**
- St Joseph's Medhost Webviewer**
- Sisters' Medhost Webviewer**
- Quantitative Sentinel - OB Link - BMH**
- Quantitative Sentinel - OB Link - SCH**
- Resident Signout**

**Client Application Sessions**

Windows Secure Application Manager

- From this point forward, use Soarian Clinicals the same as you would while at a Catholic Health Facility.
- Who do you turn to when you forgot your username or PIN?
  - Call the Helpdesk at 828-3600. They have the ability to reset PINs and remind you of your username at any time.
  - Call the Physician Support Analyst
    - Adam Lange, cell 548-1622