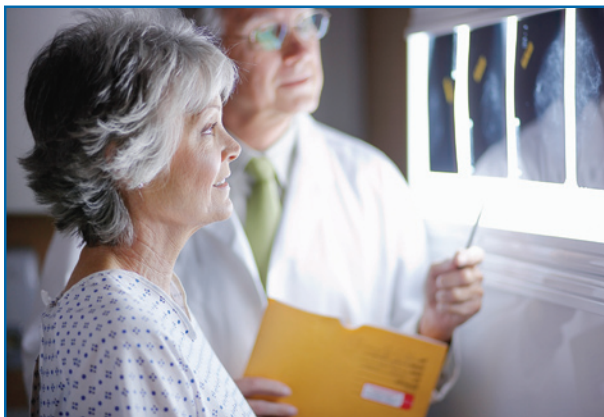


Nuclear medicine can also be used to treat disease. Therapeutic uses include treatment of hyperthyroidism, thyroid cancers, and palliative care for certain types of bone cancers.

Preparing For Your Nuclear Medicine Procedure

Ask your doctor about any special instructions you may need to follow. Continue to take your medications as prescribed unless you are instructed otherwise.

If you are diabetic, pregnant, or breastfeeding, please notify your physician and the nuclear medicine staff.



the Day Of Your Procedure

Wear comfortable clothing to your appointment. You may be asked to remove some or all of your clothing, but gowns and scrubs will be available. If you are having an imaging study, please do not wear any jewelry.

During Your Procedure

You will meet with a technologist who will administer the radiopharmaceutical. The tracer may be administered intravenously, by mouth or inhaled, depending on the type of procedure being done.

Imaging times vary with procedure, but all procedures require that you hold as still as possible to produce optimal images.

After Your Procedure

You may leave immediately following the procedure unless you are instructed otherwise and all normal activities may be resumed. Drink plenty of fluids in the 24 to 48 hours following your procedure. Your doctor may give you additional instructions.

The radiologist or nuclear medicine physician will study the images collected and report the results to your physician.

Insurance

We will bill your insurance company directly. Please bring your insurance card and referral/authorization form (if necessary) on the day of your exam.

Some insurance carriers require pre-certification for nuclear medicine. Please check with your insurance provider to see what their requirements are.



See us in a new light.